

# CombiBox solutions for aircraft maintenance in Hangars.

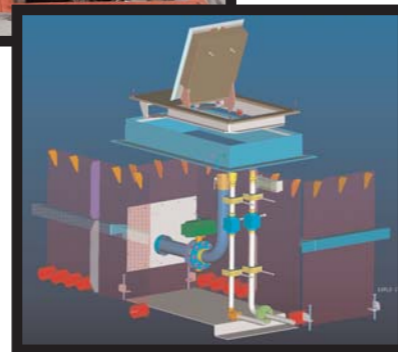
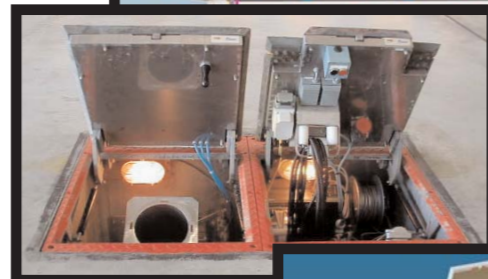
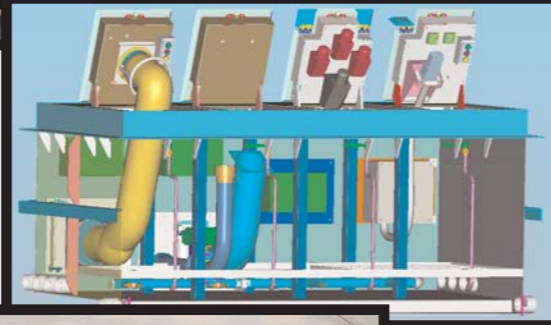


The system can also be used in hangars for e.g. light and heavy maintenance. The Combi Box boxes can supply 400 Hz electrical power to aircraft electronics, Pre-Conditioned (PCA) for cooling/heating the cabin and passenger modules, Hot and Cold washing water for washing aircraft, Jet fuel vent for clean environment in hangar, Hydraulic power for aircraft lift, Compressed air for pneumatic tools, Vacuum unit for waste and water inside the pit and Jet A1 tank before inspecting and Starter Air for testing aircraft engine and pressure inside the aircraft cabin.

The system can supply all types of 50 Hz electrical equipments for lighting, tool and data communications which otherwise are supplied by mobile units.

These installations will give similar advantages as the airport installations. They will decrease the maintenance costs, reduce air pollution, create a better and safer work environment, and speed up the work processes. Fewer people need to be involved and coordinated.

The CombiBox system is highly suitable for hangar service purposes.



To see them beautifully take off up in the sky...



...you have to safely take care of them down on the ground.



COMBI BOX SYSTEM SCANDINAVIA AB  
Vinkelgatan 15, SE-211 24 Malmö, Sweden  
phone +46 40 38 32 17, fax +46 40 38 32 19  
contact@combibox.se www.combibox.se



# The Combi Box System.

## A fixed Underground System for Aircraft Ground Support.

### Increased Safety with a clean apron...

The removal of service vehicles from the apron reduces the risk of collision between aircraft and service vehicles.

### Increased Capacity with shorter turnaround times...

The Combi Box system allows the units to be serviced independently of each other without the need for ground service vehicles. The elimination of ground service vehicles makes space available. The turnaround can be shortened, and the airport will gain from increased capacity...

### Better Ground Service...

A complete and individual service at every apron reduces waiting times, often a source of irritation and consequent costs. In the Combi Box System the control system enables individual registration of ground services...

### Reduced Costs...

Increased safety, increased capacity and improved ground service will result in substantial costs savings. The fixed system causes in itself lower labour costs.

All Combi Box Systems are delivered in accordance with Lloyd's requirements or any other regulations where applicable...



PCA service unit

### The Service Units

Different system layouts for different customers requests are possible, but basically there is one static 400 Hz converter at each stand preferably in the "ramp hose" together with an AHU servicing one up to three gates. The Fresh Water and Lavatory Service Units, capable of servicing up to 15 gates are centrally located at a suitable place. Often the systems are designed with built in redundancy and a certain overcapacity to guarantee reliable operation...

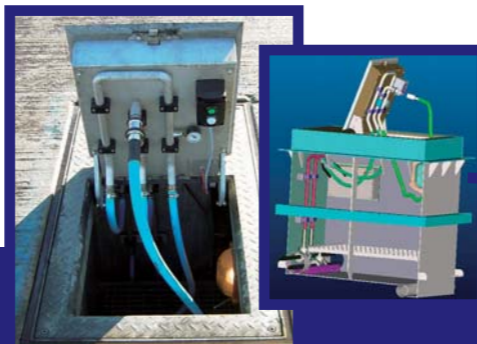


Potable water service unit



### Air Conditioning Box

From the Air Handling Unit (AHU) air is supplied through an underground duct system to the box, which contains a 10 meter, 300 mm heavy-duty hose. The box also contains a damper and pushbuttons to start and stop the airflow.



### Fresh Water Box

Using a radio remote control, the operator starts the filling without returning to the box. In between services, the hose is always attached to the recirculation connector in the lid, to keep the water circulating in the system. The hose reel is fitted in a cassette for easy maintenance. As options a drain hose can be installed as well as motordriven hose reels...

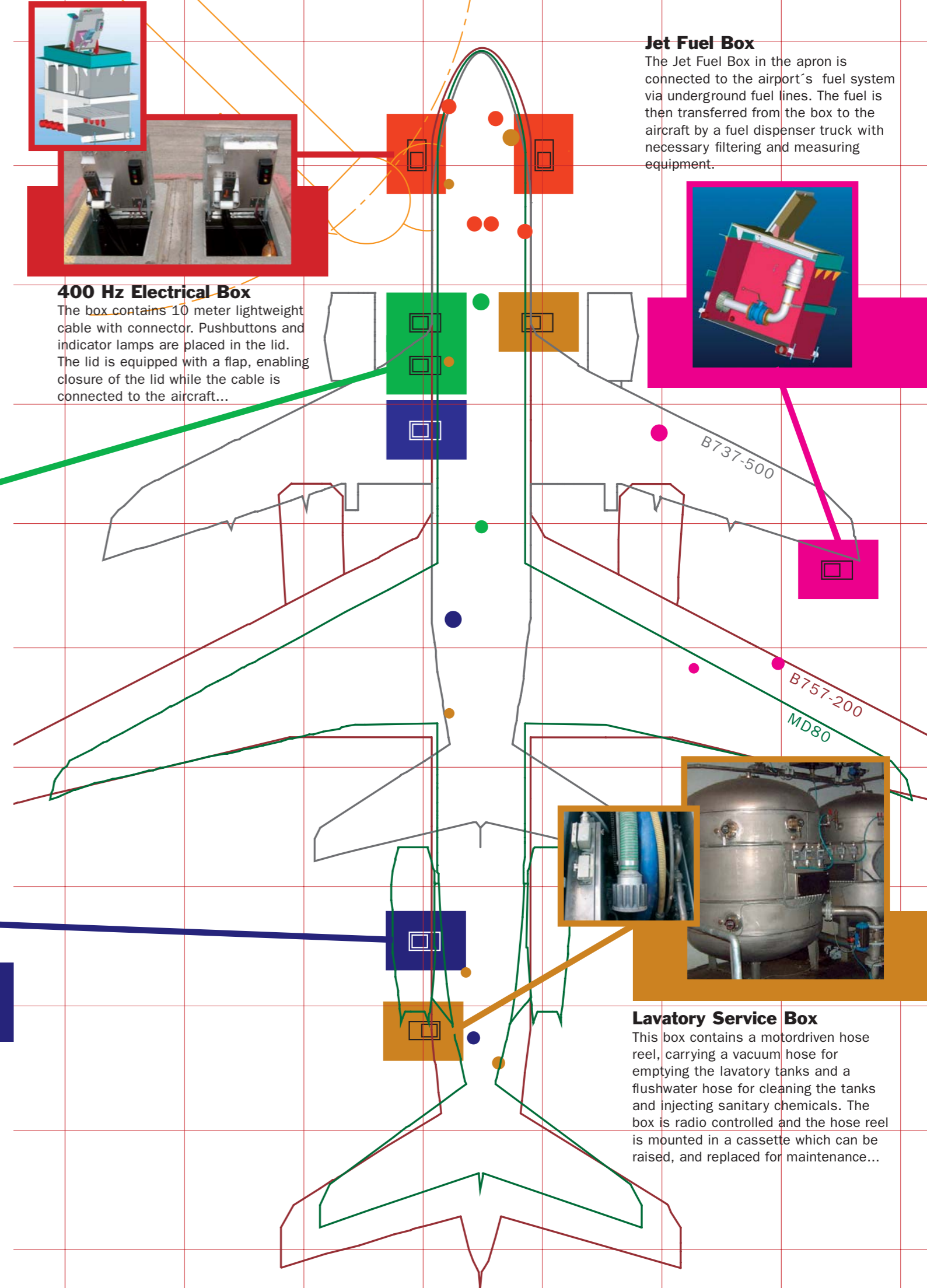
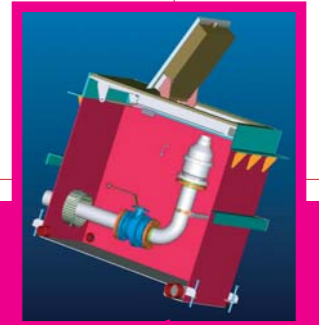


### 400 Hz Electrical Box

The box contains 10 meter lightweight cable with connector. Pushbuttons and indicator lamps are placed in the lid. The lid is equipped with a flap, enabling closure of the lid while the cable is connected to the aircraft...

### Jet Fuel Box

The Jet Fuel Box in the apron is connected to the airport's fuel system via underground fuel lines. The fuel is then transferred from the box to the aircraft by a fuel dispenser truck with necessary filtering and measuring equipment.



### Lavatory Service Box

This box contains a motordriven hose reel, carrying a vacuum hose for emptying the lavatory tanks and a flushwater hose for cleaning the tanks and injecting sanitary chemicals. The box is radio controlled and the hose reel is mounted in a cassette which can be raised, and replaced for maintenance...